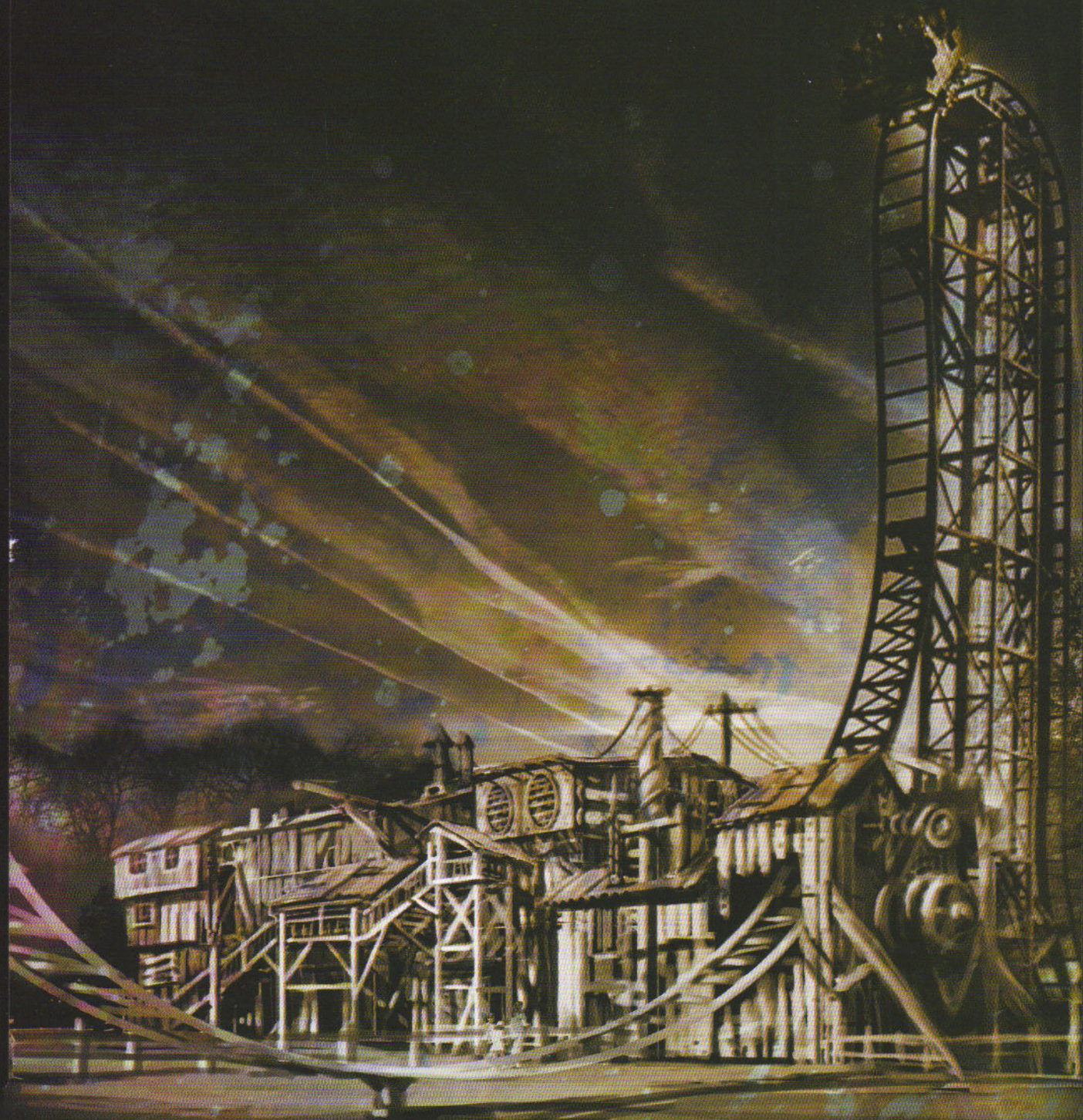


AIRtime

The Roller Coaster Club of Great Britain

Issue 68 – January - February 08

**Thorpe Park granted planning permission ...
... and what's new around the globe for 2008**





Issue 68

January / February 08

Chairman: Andy Hine MBE
andy@rccgb.co.uk

Editor and Production:
Andy Sheppard
airtime@rccgb.co.uk

'Track Talk' Researcher:
Marcus Gaines

Cover Image: Thorpe Park
proposed new coaster 2009

Article Contributors:
Adrian Whitcombe, Matt Walker

Proof Reader: Rowan Sheppard

Website: Norman Mercer
rccgb@rccgb.co.uk

Message Board:
rccgbforum@gmail.com

Merchandise & Collectables: Graham Shaw
Colleen Dudley
merchandise@rccgb.co.uk

All correspondence to:

The Roller Coaster Club
of Great Britain
PO Box 235, Uxbridge
Middlesex, UB10 0TF

For more information, news
and special features, visit us on
www.rccgb.co.uk

The Roller Coaster Club of Great
Britain is organised by Andy Hine MBE.
Any comments or suggestions may
be sent to the above address or
e-mailed to andy@rccgb.co.uk

Airtime is the registered name of the newsletter
of The Roller Coaster Club of Great Britain. All
content, including text logos, and the names
AIRtime, The Roller Coaster Club of Great
Britain, Oakwoodie, Loopathon, Summer Bash,
MegaMania and Blackpool Bash are copyright
of HINEsight. No part of this magazine or Club
logos may be used or reproduced without
express permission of HINEsight. All other facts,
figures and logos belong to the respective
parks and manufacturers concerned and are
used with thanks and in their best interest. All
the information given in AIRtime is given in
good faith. Whilst every effort is made to
ensure the accuracy of such information, the
Club or its officers will accept no liability
whatsoever for any errors inaccuracies or
omissions. Any views expressed are not
necessarily that of the The Roller Coaster Club
of Great Britain. February 2008

Printed by Ocean Print Tel: 020 8561 3344

Club News

Chairman's Comment

Welcome to your final issue of your 2007 membership. I hope you have enjoyed your year with the Club and will want to rejoin for 2008 (*renewal form enclosed*). 2008 is a special one for the Club as we celebrate our 20th anniversary. 20 years of uniting enthusiasts! In a future issue I will be looking back over the last 20 years and would like to invite you to send me your favourite Club memory or story for inclusion. Did you meet your partner though the club? How about your first USA trip? Or your first ERS? Remember taking part in a Knoebels Ice Cream Challenge? Or experiencing The Full Monty at the Bash? etc... Send your memories to the usual address or e-mail andy@rccgb.co.uk (including pictures if possible).

Also enclosed is your 2007 Yearbook and I hope you enjoy reliving the fun we had in 2007? Many thanks to everyone who sent in photos.

Finally I'd also like to thank everyone who has helped the Club in 2007. Particularly Andy & Rowan Sheppard, Marcus Gaines, Norman Mercer, Gareth Arkell, Colleen, Graham and the entire Merchandise Team and Alan Chilvers. Without whom I'd get even less sleep!

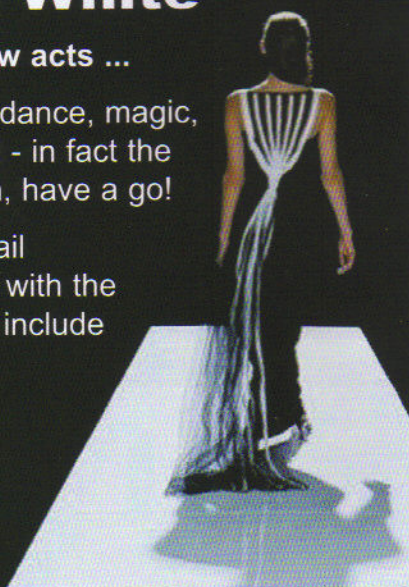
See you all at the Blackpool Bash.

Blackpool Bash 2008 Black and White

We're now looking for Gong Show acts ...

You can do anything - sing, juggle, dance, magic, etc., and you don't have to be good - in fact the worse you are the better! So go on, have a go!

If you do want to enter, please e-mail
Andy Hine on andy@rccgb.co.uk with the
subject heading "Gong Show" and include
details of your act.



Any Oakwood news?



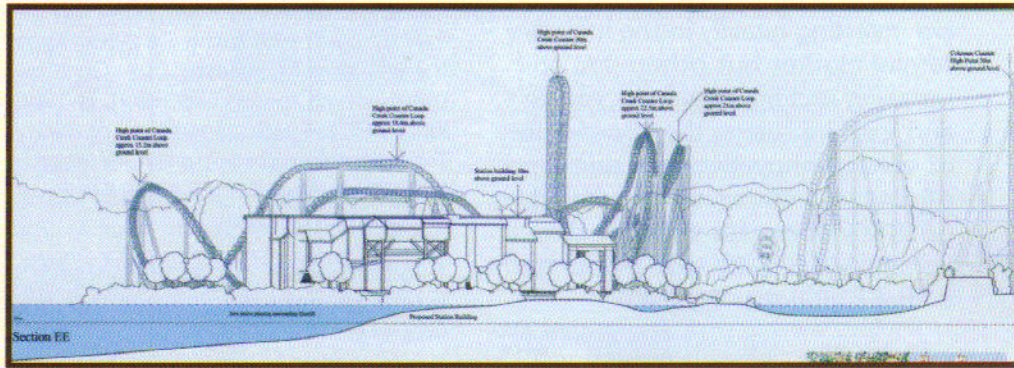
At the time of going to press with this edition of **AIRtime** Paddy McNamara, Managing Director of Oakwood confirmed, that no decision had as yet been made regarding the offer to buy Oakwood, however **AIRtime** will be the first to know about any further developments. So watch this space

Thorpe Park's new Thrill Ride is approved

Our front cover images says it all ... Thorpe Park is delighted that on 30th January 2008 Runcymede Borough Council granted full planning consent for the Park's fourth rollercoaster, and construction is due to commence in May 2008.

The key element of the Gerstlauer Eurofigher design will feature a beyond-vertical 97° first drop and stand about 100ft tall before running through a custom layout of thrill elements, including four inversions, specifically developed for Thorpe. The new rollercoaster will take Thorpe up to number three in the world for total number of inversions at a park, at an impressive 18 - ten ahead of the number two in the UK.

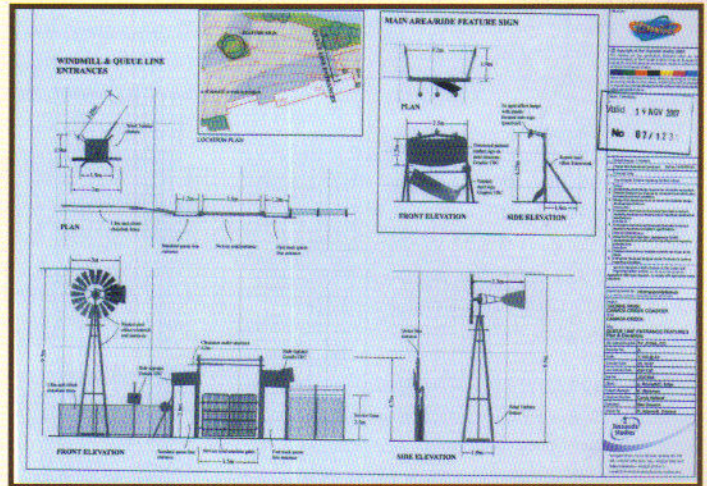
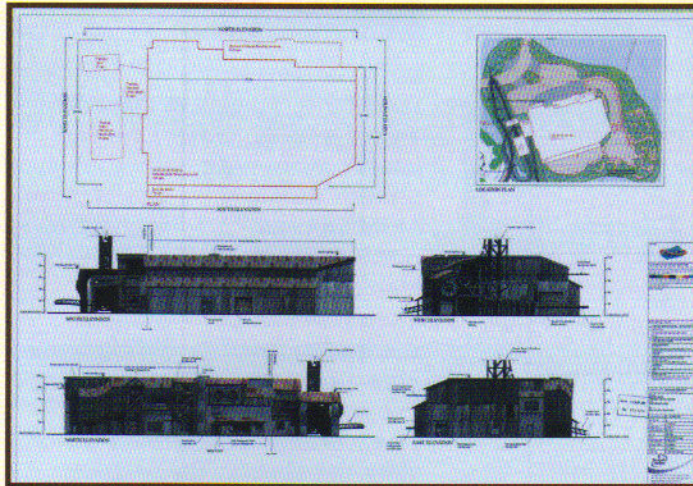
Located in the Canada Creek area of the Park, the new ride will offer thrill seekers an experience of a lifetime, creating a darker atmosphere never seen before at Thorpe. This new addition adds innovative thrills to the impressive portfolio of rides already at the Park.



2009 Rollercoaster Quick Facts:

- * 100ft, 97° 'beyond vertical' drop
- * 4 inversions
- * Each individual car holds 8 passengers
- * Up to 8 cars on the track
- * Ride duration: 1min 40 seconds
- * 30 seconds (30%) inside the station building
- * Track length: 2362ft

Peter Ronchetti, General Manager, says: "Building on the successful launch of the Park's iconic ride Stealth in 2006, the new rollercoaster will add an element of edge to an already adrenalin packed breadth of thrills on offer. We are determined to establish Thorpe Park as the UK's most thrilling attraction and adding this development to our current portfolio will certainly do that."



G-Force gets a family make-over

G-Force the popular drag track re-creator in Old Town Kissimmee has changed one of the 'funny car' style dragsters to a five seater open top version.



This allows more riders at a time and of course gives you a much more exposed feeling as you go from 0-115mph in 2 seconds! As club member Adrian Whitcombe found out!



Whilst 2007 was relatively dull for new rides and attractions things are hotting up in 2008. Many parks are investing heavily in the lucrative family market but others are still installing exciting new roller coasters and we'll be seeing the appearance of several innovative new rides and of course a major new park will open it's doors for the first time. Let's take a whistle stop global tour of the highlights for 2008.

United Kingdom

Drayton Manor Park opens up their all new kids area Thomas Town. All 12 new attractions are themed to characters from Thomas the Tank Engine. Key rides



include Cranky Crane Drop Tower from Zamperla, Rockin Bulstrode Swing Boat from Zierer and Troublesome Trucks roller coaster from Gerstlauer.

Several of the kiddie rides that were in the Robinson's Land at Drayton Manor Park have moved south to **Funland at Hayling Island**.



Lightwater Valley are adding a 25m tall Ferris Wheel from Technical Park that will be themed to look like a water wheel.

Adventure Island

will be opening their unique new cable roller coaster Aeronaut. Similar in principle to Vertigo at Walibi Belgium this new ride will offer some interactivity to riders as they choose their route across the park.

Alton Towers is transforming the Merry England area of the park into Mutiny Bay a pirate themed land complete with Battle Galleons interactive boat ride from Mack and the re themed Tea Cup ride Marauders Mayhem.

Mainland Europe

Bobbejaanland in Belgium will open a jungle themed area. The centre piece ride will be the highly themed King Kong attraction from Huss Rides. The area will also be home to a Preston Barberei Splash Battle and the indoor coaster Revolution will receive a small make over to fit the jungle theme.



Denmark will see some of the best new roller coaster action in Europe. **Djurs Sommerland** is opening Piraten a pirate themed Intamin Hyper Coaster. Piraten is

a clone of Kowloon that will also open at Tobu Zoo in Japan, it is 108ft tall and has a top speed of 90km/h.

Faarup Sommerland is installing Lynet the first launched coaster from Gerstlauer. Lynet, which means Lightning, is 1800ft long, 66ft tall with a top speed of 80km/h. The layout features a Top Hat, Immelmann Turn, Corkscrew Spin, 2 Camelbacks and an over banked turn.

Tivoli Friheden

is to receive an Inverted Coaster from the Italian manufacturer Ride Tek.



The 80ft tall Cobra features 3 inversions and a top speed of 70km/h. It is based on designs from the now dissolved Pinfari Company.

Europa Park in Germany is adding to it's family friendly offerings. The England themed area is receiving 2 rides from Zamperla, namely a Demolition Derby and Crazy Bus. Elsewhere an Indonesian restaurant is being built in Piraten von Batavia, giving diners views of the pirate themed boat ride.

Tripsdrill is putting in a new wooden coaster called Mammut. Designed and built by Stengel and Holzbau Cordes, Mammut will utilise trains from Gerstlauer. The woodie will feature a lot of tunnelling and be highly themed to a Sawmill with riders experiencing near misses with Buzz Saws.

Italy's **Gardaland** is to open a Minetrain coaster from Vekoma. Mammoth Railway bizarrely will have an ice age theme. Additionally a Sea Life Centre will open next door Gardaland. Both brands are part of the Merlin Entertainment chain.

Mirabilandia is giving with one hand and taking with the other. A new family interactive dark ride from Fabbri is being given to the park. The large ride is themed to a meteor attack on New York. Meanwhile the park will be taking away their wooden coaster Sierra Tonante, to make room for a B&M Hyper coaster coming in 2009.

Tibidabo in Spain will finally be opening a family coaster from Vekoma. The 80km/h, 2500ft long coaster should have opened in 2007 but complaints from local residents lead to a delay in construction.

Connyland in Switzerland will also be opening a delayed coaster, Cobra the shuttle coaster from Pax will finally open. Land disputes at the Russian manufacturers factory lead to the site being sealed by armed guards preventing the ride from being delivered, that dispute has now

New Ride ro

been resolved. The park will also open an interactive boat ride from ABC Rides.

The Dutch travelling coaster Cool & Fresh from SBF/Visa has found a new permanent home opening at **DippieDoe Familiepark** also in the Netherlands.

North America

Three, Six Flags parks are to receive a Dark Knight Coaster.



The standard Wild Mouse from Mack Rides is an indoor coaster themed to Batman trying to escape from the Joker, coinciding with the new Batman film. Clones of this ride will open at **Six Flags New England**, **Six Flags Great America** and **Six Flags Great Adventure**

Florida will see the arrival of a new water park. Aquatica which will open adjacent to Sea World will be a lavish



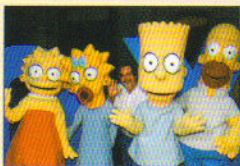
and extravagant waterpark. One of the highlights will be a water slide through a pool of Commerson Dolphins.

Elsewhere in Florida,

Bush Gardens Africa will open a new family area, Jungala will feature new animal exhibits, family rides and interactive play areas. **Disney's Hollywood Studios** (formerly MGM Studios) opens Toy Story Mania and interactive 3D ride starring the famous



Pixar movie characters. Universal Studios re-opens Earthquake as Disaster A Major Motion Picture Ride featuring a new story and effects. The Simpson's -



The Ride is a reworking of the Back To the Future simulator and will also open later this year.

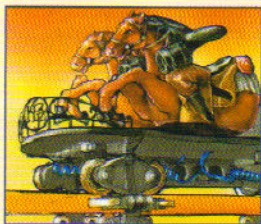
Indiana Beach is opening a new type of coaster from S&S Power. Steel Hawg is an extension of the Screaming Squirrel idea. The steel coaster features 3 inversions and a 90degree banked turn with the cars tipping outwards.

Families are in for a treat in California. **Disney's California Adventure** is adding it's own Toy Story Mania



and-up 2008

dark ride. Knotts Berry Farm is installing the family coaster Pony Express, a horse themed Motocoaster from Zamperla launching riders to 60 km/h in 3 seconds. Legoland California is getting a new themed area "Land of Adventure" complete with 4 new attractions with the centre piece being Lost Kingdom Adventure an interactive dark ride from Sally that sees riders travel in jeeps through 9 scenes. Additionally a Sea Life Centre is being built adjacent to the park. Six Flags Discovery Kingdom is getting Tony Hawks Big Spin a spinning coaster from Gerstlauer, a virtually similar model is also being built at Six Flags Over Texas. In addition to the re theme of X and the new lighter sleeker trains Magic Mountain is adding a new kiddie area, Thomas Town, themed to Thomas the Tank Engine. The Forest at Granite Park is getting 24 brand new attractions including a family coaster from Zamperla the new rides will be joined by Lightning Bolt coaster formerly of GM Theme Park in Las Vegas.



Centre is being built adjacent to the park. Six Flags Discovery Kingdom is getting Tony Hawks Big Spin a spinning coaster from Gerstlauer, a virtually similar model is also being built at Six Flags Over Texas. In addition to the re theme of X and the new lighter sleeker trains Magic Mountain is adding a new kiddie area, Thomas Town, themed to Thomas the Tank Engine. The Forest at Granite Park is getting 24 brand new attractions including a family coaster from Zamperla the new rides will be joined by Lightning Bolt coaster formerly of GM Theme Park in Las Vegas.



Granite Park is getting 24 brand new attractions including a family coaster from Zamperla the new rides will be joined by Lightning Bolt coaster formerly of GM Theme Park in Las Vegas.

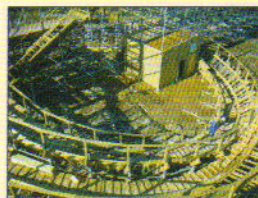


Six Flags St Louis is receiving a new woodie from GCI. Themed to the legendary stunt motorcyclist, Evel Knievel is 2700ft long with a height of 79ft and will feature 90degree banked turns.

Great Nor Easter SLC at Morey's Pier is being updated with all new trains from Vekoma. The trains feature all new style over head restraints offering riders more freedom and greater comfort. The park is also receiving 2 new family flat rides from Zamperla.

Darien Lake in New York has purchased the prototype Motobike Coaster from Zamperla. The transportable model that had been used as a demonstrator at the Zamperla factory in Italy uses a train made up of 12 motorbikes.

Waldameer in Ohio will be home to what is expected to be the best new woodie of the year. Ravine Flyer II from Gravity Group is a reproduction of the 1922 Ravine Flyer built by Miller/Baker. The modern remake utilises a steel structure and features 120ft first drop, 3000ft of track, 90 degree banked turns, 10 spots of AIRtime and crosses a bridge over a 4 lane highway. Gravity Groups Korey Kiepert describes the ride as a cross of Voyage and Cornball Express, claiming it to be the ride you won't want to miss in 2008.



Hersheypark will be home to another new coaster from Intamin. Fahrenheit features a 90degree lift, 97degree first drop, 6 inversions including a Norwegian Loop (first seen on Speed Monster) and comes to the park with a price tag of over \$12million.



Knoebels will be opening their delayed new wooden coaster, Flying Turns.

Dollywood is creating a complete loop for the park joining the two ends of the the horse shoe layout. As part of the join the park is adding River Battle an interactive boat ride from Mack. Riders will be able to squirt many targets to disable and trigger water jets.



Of course no US round up would be complete without talking about the highly anticipated brand new Hard Rock Park. The Myrtle Beach park will open with 5 roller coasters including Led Zeppelin, a B&M looping coaster with on board sound system and LED lighting, Midnight Rider mine train from Vekoma, Shake Rattle and Roller Coaster family coaster also from Vekoma, the Premiere Rides installation, Maximum RPM, features a Ferris Wheel for the lift hill, and finally Slippery When Wet is a second hand Hydro Coaster from Set Point.



Further north in Canada the only notable project is Behemoth at Canada's Wonderland. At 230ft tall

with 125 km/h top speed the B&M Hyper coaster will be the tallest and fastest coaster in Canada.

Asia

Perhaps one of the busiest countries is China where the amusement industry is expanding at an exponential rate and Vekoma are doing especially well.

Beijing Shijingsen Amusement Park is adding a family suspended coaster and a standard family coaster. Chimelong



Paradise has just opened a 200ft B&M Dive Coaster with floorless trains and splash

downs. Additionally Mack is currently building a SuperSplash and a water coaster in the park. Disneyland Hong Kong is finally opening the much loved It's a Small World boat ride. The new Happy Valley Chendu Park will open with a Vekoma SLC and a mine train in addition to an S&S Space Shot and North Pole themed dark ride from Sally. Happy Valley Shenzhen is opening a spinning coaster from Chinese manufacturer Golden Horse Rides. Suzhou Giant Wheel Park is opening a prototype compact flying coaster from Vekoma featuring 2 inversions.

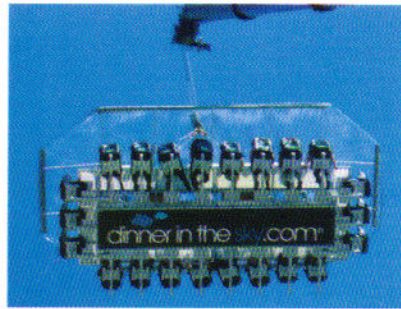
Everland in South Korea is opening a Balder style woodie from Intamin. The plug and play coaster called T Express is over 5000ft long with a top speed of 104 km/h.

Well those are just some of the highlights and there are many other rides opening throughout the World, with a whole heap of ride relocations. If you don't like the look of what's on offer then stay tuned as news is already emerging of some spectacular roller coasters coming in 2009. As a quick teaser we know Thorpe Park can install a Eurofighter from Gerstlauer, Sea World Florida have begun work on a flying coaster from B&M, Gravity Group are building their first woodie in China, Universal Studios Florida have bought a coaster from Maure Sohne, Hansa Park is adding a launched Maure Sohne coaster, a new indoor park in the Mall of Arabia is getting a custom Maure Sohne spinning coaster, Kings Island is building a B&M hyper coaster and the Worlds fastest coaster is set to open next to the Nurburgring in Germany. In the mean time have a great 2008 and enjoy what the parks have got on offer this year.



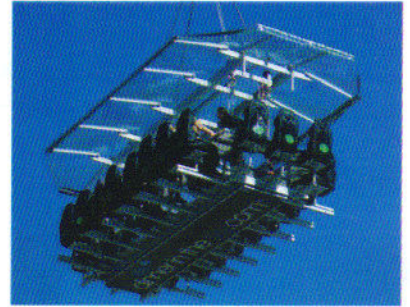
A short pictorial report from Orlando

IAAPA Attractions EXPO SHOW 2007



Showing at the 2007 IAAPA conference in Orlando was the unique restaurant experience - "Dinner In The Sky" - which is exactly as it sounds!

You are strapped in your seat, and taken up a couple



of hundred feet where you then enjoy fine cuisine! Not sure what happens if you need the loo between courses though!

In a new variation to the 'Disko', 'X' style cars have been

added allowing for 360 degree roll overs!



Who's Got a Golden Ticket then?

This, the 10th annual year for Amusement Today's coveted Golden Ticket Awards, which are the most sought-after awards in the business of amusements and attractions. **Gary Slade**, publisher and editor-in-chief of Amusement Today, says "When we began this survey 10 years ago, I never would have dreamed it would become such an anticipated and big sensation. The Golden Ticket Awards have been compared to

the Academy Awards for the amusement industry ... these are truly the 'Best of the Best' as voted by amusement park fans around the world." Some of the 2007 winners of the prestigious Golden Ticket Awards are ...

Best Amusement Park
Cedar Point, Sandusky, Ohio

Best Waterpark
Schlitterbahn Waterpark, Texas

Best Children's Park
Legoland California.

Best Marine Life Park
SeaWorld Orlando, Orlando, Fla.

Best Seaside Park
Santa Cruz Beach Boardwalk, Calif.

Best Wooden Coaster
The Voyage at Holiday World, Santa Claus, Indiana.

Best Steel Coaster
Superman Ride of Steel at Six Flags New England.

Best Kids' Area
Kings Island, Kings Mills, Ohio



Best Food
Knobels Amusement Resort.

Best Halloween Event
The Haunt at Knott's Berry Farm.

Best Water Ride
Dudley Do-Right's Ripsaw Falls at Universal's Islands of Adventure, Orlando.

Best Waterpark Ride
Master Blaster at Schlitterbahn Waterpark Resort, Texas

Best Indoor Waterpark
World Waterpark, West Edmonton, Alberta, Canada

Best Dark Ride
Amazing Adventures of Spiderman at Universal's Islands of Adventure, Orlando.

Best New Ride of 2007 - Amusement Park
Maverick at Cedar Point, Ohio

Best New Waterpark Ride of 2007
Bakuli at Holiday World & Splashin' Safari, Santa Claus, Indiana.

Best Carousel
Grand Carousel at Knobels Amusement Resort.

Best Indoor Roller Coaster
Rock 'n' Roller Coaster at Disney-MGM, Orlando.

Best of the British Top 50 Wooden Coasters
25th - Megafobia - Oakwood Leisure Park, Wales

28th - The Grand National - Pleasure Beach Blackpool

Top 50 Steel Coasters
14th - Nemesis - Alton Towers
44th - The Big One - Pleasure Beach Blackpool

Pleasure Beach Blackpool also achieved:-
2nd in the Best Water ride with Valhalla.
5th in the Best Park category, and 2nd in the Best Seaside Park.
Congratulations Blackpool.

Who's that TV Star in the making?

For the observant of you that have been scratching your heads thinking ... 'I'm sure I've seen that face before' ... well you may just be right!

Club member **Carl May**, has been earning his pennies recently by appearing as an Extra in several BBC TV series. No nothing to do with Ricky Gervais, but more like **The Drving Instructor** starring David Tennant.



The more eagle eyed of you may also have spotted Carl recently hanging as a 'silent' Detective about in the new series of Ashes to Ashes.

So remember at club trips Carl will be there incognito, but then I'm sure he won't mind the odd autograph.

Keep up the good work Carl.



Carl with some of his fellow 'Extras' on the set of the BBC's Ashes to Ashes

AIRtime would like to thank everyone who has contributed text and/or images for this issue including:- **Mark Blundell, Adrian Whitcombe, Carl May, Matt Walker**, along with the featured parks, manufacturers and suppliers - and anyone else we may have inadvertently omitted.

Members moments ...



Top of the members news this issue are huge congratulations to **Liz and Graham Cook**. Liz gave birth to a beautiful baby boy, weighing 6lb 7oz on Thursday 7th February. Very best wishes are sent from everyone in the Club to you all.

Also congratulations to **Donna and Andrew Gilbert** who took delivery of a beautiful little girl, Amy Marilyn on Monday 18th February, and as you can see is managing 'no hands' on her baby bouncer already! Both mum and baby are doing well, and Amy hope to make her club debut very soon.



Extra special birthday wishes this issue to **Taylor Sheppard** who was 16 on the 30th January, and also 'break a leg' to both **Taylor** and her sister **Devonne** are appearing in Schools We Will Rock You during half-term in February with Centrestage Productions Youth Theatre in Eastleigh.

Other birthdays of note to mention during January and February are:- **Greg Spalding, Steve Burns, Chris Fletcher, Helen Pike, Gareth Preece, Matthew Painter, John Friend** and **Richie Bambrook** - and little bird tells us it is a big '0' for you next year eh Richie?



Congratulations are passed on to **Sarah Booker** who has recently won an award for her diligent skills at work.

Also congratulations to **Thomas Wright**, whose Mum Claire tells us that just before Christmas he managed to ride his 20th coaster, and all before his 3rd birthday.

And lastly I've been instructed to tell you that as well as reporting on everyone elses good news, I am also to say that I have recently started a new role, as Sales and Development Manager at The Mayflower Theatre in Southampton. We are the largest independent Theatre in the country, presenting large scale touring theatre in the provinces. The good news for you is that maybe now I am settled again, and not working on short contracts any longer, I can start to get **AIRtime** back out on time!!



Please keep on sending us your news, we are interested in it all ... Babies, Birthdays, or a new Job, just send it in and get a mention here, in this column. Just drop us an e-mail at airtime@rccgb.co.uk with your name (*proper name please - not just a web alias*) and the details of your event, and you'll soon find yourself in **Members Moments!**

DATES FOR YOUR DIARY

11th - 13th April 2008 - Blackpool Bash ~
20th Anniversary Celebration - Black and White Theme

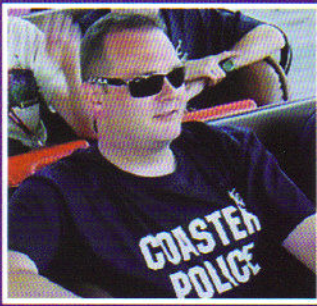
7th - 15th June 2008 - USA 2008 ~ Koaster Krazy

9th August - 'Mega' Mania - Oakwood Leisure Park, Wales

4th & 5th October - Loopathon 2008 - Alton Towers and Drayton Manor Park

Full details will be sent with trip application forms, when applicable.
All trips, venues and itineraries are subject to change.





A day trip to Dublin... and Funderland - Ireland's Traveling Fair ... by Matt Walker

During the winter there's not many coasters to be found around the UK ... so on Thursday 10th January myself, Mark Blundell and Harvey Lemon decided to pop across to Ireland to experience Funderland, the annual Irish fair in Dublin.

We gathered at Bristol airport in appalling weather with high winds and sideways rain, always good for a bit of **AIR** during the flight take off! Luckily our flight was on time (most were delayed by the weather), and soon we were on our way. With the predicted **AIR** during take off we soon cleared the bad weather and landed at Dublin, in the sun, just 45 minutes later.

Funderland didn't open until 2pm, giving us time to sample the true

taste of Dublin in a local Pub with a pint or so of Guinness and a bite to eat.

Funderland is held at the RDS complex in Dublin and is mainly an indoor fun fair giving it the advantage of being able to be open everyday whatever the weather. There are only 4 outdoor rides which can therefore be weather effected. Not a problem today, it was sunny!

The first ride we tried was the Shockwave looping coaster. This is new to Funderland and their pride and joy this year. For a travelling coaster, it is both fast and smooth and very re-rideable, there are some sharp bends that can be amusing if you are sat on your own



without the benefit of someone else to stop you flying about in the car! Next we sampled the Wild Mouse. As most Wild Mouse rides are similar, we try to rate them on "spinnyness". This was again very good and impressive as it's a good spinner! (The spinniest we've had is on the end of Blackpool South Pier). The third coaster of the day was the Gold Mine Express coaster. This is basically a big apple coaster with a gold mine theme, well painted, tidy and what you'd expect from this type of coaster.

With all the coasters done, we looked around the indoor part of the fair. Firstly we went on the Roller Ghoster ghost train, which runs on coaster tracks but is powered so doesn't count as a coaster. Excellent themeing and special effects for a travelling ride.

At this point, one of the organizers had spotted the "RCCGB Jackets" and kindly organized a book of 10 free ride vouchers for each of us. This was great, allowing us to have many more rides including the Magic Carpet, Waltzer, Snow Jet, Top Spin and Take Off. The Take Off is insane; I had not been on one before, and wow!! I have never experienced so many G's on a flat ride before.



One final go on the indoor Gold Mine Express coaster, and we headed back outside. With the sun starting to set, we did the Jubilee big wheel for photo's first. Offering up a free ride voucher, the operator wouldn't accept it as we were "coaster people", thus giving us a ride which equated to "Even free-er than free"!!!

We used up all remaining vouchers enjoying the Shockwave coaster at the front, middle, back etc. before heading out of the fair and catching the bus back to the airport.

During the journey home, we all reflected on the day and decided it was awesome. We were made to feel very welcome by Funderland, and had a great day, with three coasters and a great selection of over 15 other rides.

Next year we hope to return. If you book ahead and get a cheap flight, we would definitely recommend it to anyone for a good day out. This day trip including flights only cost us approx. £67 each all in!!

Many Thanks Funderland!!

