

# AIRtime



Issue 2

Oct/Nov 1996

## Two Big Steelies

**D**orney Park in Allentown, Pennsylvania, USA, has just announced that it is to open a 200 foot high steelie for the 1997 season. The coaster will be named Steel Force and will be the tallest roller coaster on the East Coast of America. The coaster will reach speeds of up to 75mph as it travels its 5600 feet of track. Riders will drop 205 feet from the lift hill before racing through a 120 foot long tunnel, followed by a 161 feet high second hill. And that's not all! Inside the tunnel there are two tracks, running in opposite directions. When the timing is right, one train will pass the other at high speed, a feature unique to this coaster. Other features include the trains passing through the structure four times at speeds of 60mph and two points where riders will experience AIRtime.



the lower end of Dorney Park, running from near the existing double loop coaster, The Laser, along to the Hercules, once the worlds tallest wooden coaster at 157 feet. The coaster also joins the excellent Thunderhawk, a 1923 Schmeck wooden coaster.

The coaster is designed by Morgan Manufacturing of California, a company famous for their coaster trains (Anaconda - Walibi Smurf, Le Monstre - La Ronde, Giant Dipper-Belmont Park, etc).

### FORCE FACTS

Dips	1st	200 feet
	2nd	161 feet
	3rd	100 feet
	4th	85 feet
Biggest drop		205 feet
Length of track		5,600 feet (over 1 mile)
Tunnel		120 foot
Ride Duration		3 minutes
Maximum speed		75mph
Number of trains		3
Capacity per train		36 riders
Capacity per hour		1700
Material		Steel
Design Style		Out and back.

### PARK FACTS

Dorney Park was founded in 1884 by Solomon Dorney.

The park was purchased by Cedar Fair, L.P. in 1992 (owners of Cedar Point, Valley Fair & Worlds Of Fun).

## Alpengeist - Busch Gardens

Busch Gardens Williamsburg in Virginia, USA is installing a 195 foot tall (the worlds highest), inverted roller coaster for the 1997 season. The ride will be named Alpengeist and will be themed as a runaway ski-lift. The coaster will be constructed around the parks natural ravines and above the Le Scoot log flume. It will feature six inversions including a 106 foot high loop and will have a top speed of 67mph!





# Track Talk

## News from around the world



### Europe

- ☺ Walibi Park in Belgium is to install a Vekoma Inverter for the 1997 season. The coaster will be the second inverter at a Walibi Park, the other being at Walibi Flevo in Holland.
- ☺ Efteling Park in Holland has purchased a 130 year old Carousel from the Vancouver World Fair in Canada. The Carousel originates from Holland and has 16 horses and two gondolas.
- ☺ 1500 guests were evacuated from their hotel at Disneyland Paris on September 7th. Most were dressed as they were preparing for the parks 8.00am opening, but at least 100 people were forced out in their night attire! Not for long though as Disney Chiefs allowed them to have a complimentary shopping spree to reclothe themselves!

### USA

- ☺ The Six Flags Corporation plan to add waterparks to their parks, Great Adventure in New Jersey, Over Georgia, in Atlanta, Mid America in

Missouri and Great America in Illinois. They will open in 1998 and will mean that all of the Six Flags parks will have a waterpark. The others are Astroworld in Houston, Over Texas in Dallas, Fiesta Texas in San Antonio and Magic Mountain in California.

- ☺ The Starchaser indoor coaster (a Schwartzkopf Jet Star II) has been moved from Kentucky Kingdom in Louisville to Darien Lake in New York State.
- ☺ Allan Harris, Chairman and CEO of Arrow Dynamics has announced that Ray Williams will take over as President of the company when Ron Toomer retires shortly. Ray has 28 years experience in the amusement business and was most recently the President at Six Flags Great Adventure in Jackson, New Jersey.

- ☺ Paramount's Kings Island in Cincinatti will be adding an Intamin Giant Drop to its Coney Mall section of the park.

The new generation free fall should be running for the new season.

- ☺ In Issue 1 'Queue Line Gossip' I reported that Kennywood Park in Pittsburgh were rumoured to get a new generation free fall over 200 feet high. This has now been confirmed and a 250 foot high Intamin Giant Drop will open next season in the helix of the Steel Phantom roller coaster. This will be the tallest ride of its type so far.
- ☺ Six Flags Great America in Gurnee, Illinois is adding a 227 foot high Intamin Giant Drop new generation free fall for next season.
- ☺ A new coaster manufacturer has been created in America. Inverted Technologies based in Roy, Utah will be headed by R. Trent Hanson and Bill Dauphinee. PTC will manufacture trains for the new steel coasters and the first ride is expected in the very near future.

### Get Well Soon

The Roller Coaster Club of Great Britain and all its members wish Mr Geoffrey Thompson, Managing Director of Blackpool Pleasure Beach a safe and speedy recovery from the stroke suffered recently.

### INTERNET

Are you on the Net? If so there is an excellent coaster web site just waiting for you to surf! Club photographer Alan Baldwin has spent a long time putting together a special RCCGB web site. It has membership details, trips details, merchandise information and loads of other Club related items, including photographs of members! There are also links to many other coaster related sites as well.

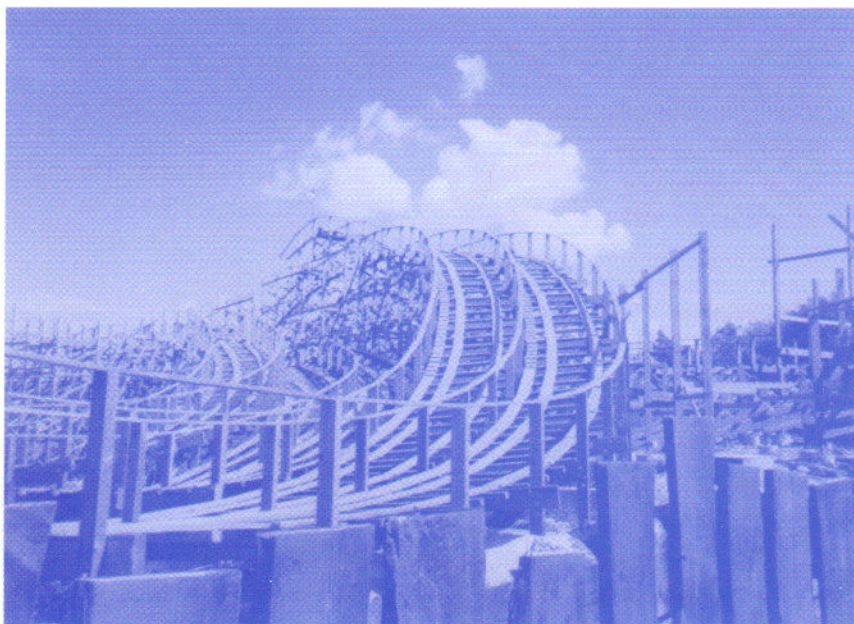
To access the Club site enter- <http://www.demon.co.uk/arvis/rccgb>  
And don't forget you can E-mail me at- [rccgb@aol.com](mailto:rccgb@aol.com)

I am currently creating a directory of members who use E-mail. If you wish to be included, please send me an E-mail indicating your request to be added and of course your E-mail address.



## Port Aventura Update

As of October 7th approximately 3/4 of the structure is complete including one of the trickiest sections which features no less than five track wide bents (the wooden cross beams). Tracking of the new coaster is due to start very soon and again the project is well on schedule.



*If you look very closely at the photograph on the right you can see five tracks. Two sets of racing tracks, a single track on the left. The single track is the kiddie coaster. Photo:- Stephen Bunting*



### HILLINGDON

The great debate continues as to whether or not Warner Brothers Movie World will open in Hillingdon. Below and in the next few issues I shall give you the reasons why it should happen.

#### WHY HILLINGDON?

- Nearly 150 sites were studied over a two year period before Hillingdon House Farm was selected as the only suitable location.
- The site has superb access to the motorway and trunk road with direct access from the A40/M40.
- The site is adjacent to Hillingdon Underground Station meaning that many visitors will use public transport.
- There is a low level of existing public use of the site because of outdated and poor facilities.
- There are no other available sites of this size to the west of London, especially with the excellent transport links.
- Hillingdon House Farm has unique characteristics that make it the only suitable site in the UK.
- I live half a mile from the main entrance!!

#### THE NATIONAL INTEREST

- Movie World will attract visitors from all over the UK and abroad.
- The tourist industry and the Government have identified that Britain needs a new attraction to compete in the developing theme park market.
- Movie World will have a significant benefit to the region's economy and employment.
- Movie World will assist greatly in the marketing of London as a world-wide tourist attraction.
- The working film and TV studios at Movie World will boost exports of British made programmes.
- Movie World will provide excellent educational opportunities for students of leisure and tourism.
- Movie World will enhance London as a world recognised media and film making centre.

**In forthcoming AIRtimes I will list the benefits to Hillingdon, and the following issues:- employment, environment and ecology, traffic and transport, and "what are people saying about Movie World?"**



# Home News



## Battersea

Four investors have reached an agreement to turn Battersea Power Station in London into an amusement complex. The consortium will be spending the next six months developing a plan for the 31 acre site at an anticipated cost of around £200 million.

## Pleasureland, Southport

A Club favourite, The Flying Scooters, is to be installed at Pleasureland. No date for opening yet as the ride is being imported from Clementon Amusement Park in New Jersey, USA and is in need of some restoration.

## Southend Pier

You may have seen press reports about a 250 foot high coaster to be built at the end of Southend Pier. Believe it or not these reports are almost true. The Southend On Sea Borough Council have issued a development prospectus seeking a partner to fund and build the world's largest roller coaster at the end of the world's longest pier. The site, located one mile out to sea will offer the ultimate in ride experience, with water on all four sides!

The report goes on to say that with the proposed ride being 250 feet high and one mile out to sea, the 'dominating' impact will be reduced.

The Pier would provide access to and from the roller coaster utilising the existing Pier Railway system, although there is provision for an additional track and space for providing a 'rapid transit system'. This though would have to be provided at the developers cost.

Development submissions must be

given to the Council by 28th October. Following this all applications will be referred to the Leisure and Tourism Committee on the 19th November for consideration and selection of the 'preferred developer/s'. Updates will be printed in AIRtime as and when available.

## Alton Towers

The end of an era. The Thunder Looper at Alton Towers is currently giving its very last thrills in the UK. The shuttle loop coaster which was expected to move to a park in either Russia or East Europe may now be heading to Brazil. The recent Club trip, Loopathon '96 saw our first and last exclusive ride session (ERS) on the Thunder Looper and some members managed 17 rides non stop before burning candles were held high and a few moments silence as one of the Club's all time favourite coasters roared past one last time.

Full details of the replacement ride in the next AIRtime.

## FREE FALLS / GIANT DROPS / SPACE SHOTS

It seems that enthusiasts can't get enough of them. These breath taking rides in which riders are taken to heights of well over 100 feet and then dropped are just getting more and more popular. So much so, that we may even see one in the UK next season. S&S Sports Power who are responsible for the Space Shot on the roof of the Stratosphere Tower have signed an agreement with Worlds Of Fun in Kansas City for a twin tower version. Two 200 foot tall towers will take 12 riders each from the ground to top in just one second (giving riders 4.5g's) before falling back to the ground (giving riders -1g). Named Detonator it is the first two tower version in the world. Space Shot's are simple towers where riders sit in fours around the outside and are basically fired upwards before falling back to the ground!

Intamin who produced the original Free Fall machine and now the new generation called Giant Drop are also busy with new installations and a new version called Gyro Drop. The original Free Falls can still be ridden at the Edmonton Shopping Mall in Edmonton, Canada, Six Flags Magic Mountain in California, Six Flags Over Texas in Dallas, Texas, Cedar Point in Ohio, Astroworld in Houston, Texas and Six Flags Great Adventure in Jackson, New Jersey. These are the 110 - 130 foot four person versions that look like a large 'L' from the side. Riders rising to the top like in a regular lift, before being pushed forward and dropping vertically and then curving into the horizontal section and into the brakes.

Intamin's new generation Free Fall, the Giant Drop is selling well and currently there are five in operation with many more orders currently being delivered. The five operating can be found at, Kentucky Kingdom in Louisville, Kentucky, Paramount's Great America in Santa Clara, California, Paramount's Carowinds in Charlotte, North Carolina, Adventure World in Largo, Maryland and Australia's Wonderland in Eastern Creek.

These versions vary in height with the current highest being 224 feet. The riders sit in fours and are taken up the tower by electro magnets before dropping back to the ground and being stopped by magnets!

The Gyro Drop is an increased capacity version which can seat up to 60 riders. When the car climbs it rotates (as with Space Towers) giving open air views of the park before it reaches the top of the towers and drops straight down!

There are many different views as to which is the best version but if you have never ridden any of them, they are all good! The Intamin version is good for building the tension as it takes a rather leisurely pace upwards before the drop and the S&S version gives a different thrill by being fired upwards before dropping back to the ground. This is the version we may see in the UK next season.



# Playland

During the 1920's Rye Beach just North of New York City had become a run down area of cheap hotels and poor eating establishments all competing with one another for dwindling crowds. Two amusement park areas, Paradise Park and Rye Beach attracted rowdy crowds and caused outraged locals to petition the Westchester County Park Commission to purchase and redevelop the area as part of the county's developing park system.

In 1923 the County Board of Supervisors authorised an allocation of \$600,000 (£400,000) for the purchase of 160 acres of Manursing Islands and in 1925 an additional \$2,500,000 (£1.6 million) to acquire 54 acres of Rye Beach. The Park Commission announced its intention to create an "unequaled seaside public park to provide clean, wholesome recreation for the people of Westchester County". Major Gilmore D. Clarke, the Commission's head landscape architect was sent to study amusement parks around the United States.

Frank Darling, a former manager at Coney Island Amusement Park and President of the L.A. Thompson Scenic Railway Company, oversaw the construction and became the first general manager of the park.

During the 1926 and 1927 seasons, the Commission operated the old amusement areas to gain experience and began to demolish the shabbier buildings. In June 1927 over 1000 workers moved onto the site and construction began. In March the following year painters, gardeners and craftsmen covered the park and an amazing one million square feet of pavement was laid in just three weeks. Picnic areas, beaches, gardens, were created, restaurants, rides and boat houses were built and four hundred uniformed staff were employed and trained to

greet the public. On May 28th 1928 Playland was formerly opened by Arthur Lawrence, President of the Park Commission, and Charles Millard, Chairman of the Board of Supervisors.

establishments attracted many people. However it was the outstanding amusement rides that thrilled the crowds. Legendary designer Fred Church was brought in to engineer the rides. He was responsible for the famous

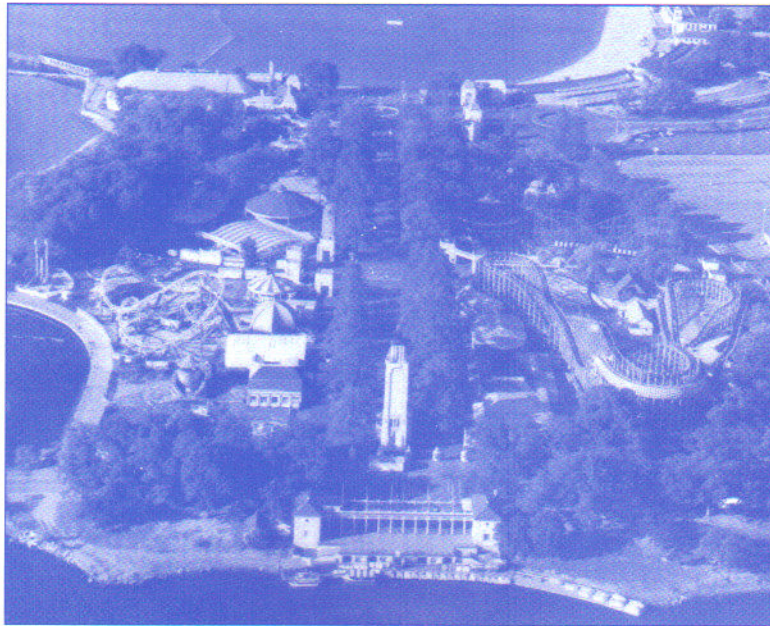
'Bobs' style coaster, The Aeroplane. This operated in the park from 1928 to 1957.

It has been said that this was one of the greatest wooden coasters of all time. Other attractions included Kiddyland, where nurses and play attendants enabled parents to "park 'em and leave 'em" whilst they enjoyed the rest of the park.

Other attractions installed in 1928 included a Fun House, Dance Hall, Tumble Bug, Noah's Ark, Caterpillar, Dodgems, Tilt-a-Whirl (US type Waltzer), Whip, Derby Racer and a Carousel. The last three are still operating today. In 1929 the Dragon Coaster was added, and has remained a park favourite ever since.

The County Park Commission operated Playland until 1940 when the Playland Authority was created. In 1942 the Authority was chartered as the Playland Commission by the State as a Public Benefit Corporation. In 1980 the charter was allowed to lapse and the Marriott Corporation was selected to run the park

on a trial basis for two years. In 1983 Westchester County placed management of the park under its Department Of Parks, Recreation and Conservation. A continuing program of restoration and improvements of all aspects of the park was undertaken. The chairman of the Parks Department's Historic Preservation Advisory Committee successfully applied for the placing of Playland on the National Register of Historic Places thus assuring the future of this unique Art Deco park which has been part of a family recreation in Westchester since 1928.



The park today

Playland was America's first totally planned amusement park and the prototype for today's theme parks. The unity of Playland's original design can be seen in the symmetry of the Art Deco buildings and the landscaping of the 280 acre park.

The colonnades on both sides of the flower and tree-lined grass mall connect the Music Tower and Fountain Plaza and are dissected by a cross promenade.

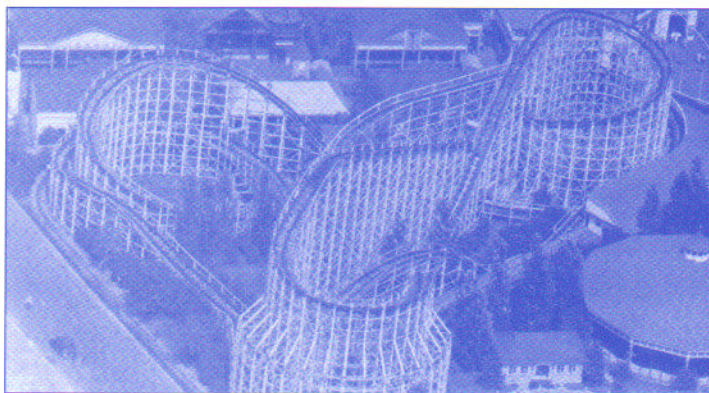
Manicured walkways, near picnic areas and fine eating

## Two coasters still operating at the park

And one sadly not....

### DRAGON 1929

Designed by  
Fred Church  
Height - 80 feet  
Length - 3400 feet  
Duration - 2 minutes  
Special Feature - The  
trains run into the mouth  
of a Dragon.



The Aeroplane Coaster opened in 1927 and has been named the "greatest body wringer and most violent ride ever built". It closed in 1957. Both photos: Playland Archives

### WHIRLWIND 1984

Designed by  
Vekoma  
Height - 69 feet  
Length - 1371 feet  
Duration - 1m 30sec  
Features - Two  
inversions

## PLAYLAND TRIVIA

Hollywood actress Glen Close can be seen riding the Dragon Coaster in the movie 'Fatal Attraction'. The amusement park scenes from the Tom Hanks movie 'Big' were filmed at the park.

The park is located on Playland Parkway, Rye, New York.

It is open from May - September. Admission is free and you pay-per-ride.





# Queue Line

## Gossip

### USA

#### Magic Mountain, California

Superman – The Escape is still not running. However rumours in the park suggest that a 'booster' unit costing around £175,000 has been fitted to help the cars reach the required speed. If all goes to plan they hope to have the first members of the public riding by the end of October. The hope is that although it will only be reaching around 90-95mph instead of its planned 100mph speed, the ride will still give around four seconds of AIRtime. This will enable the park to gain public reaction to the ride. Apparently the last test resulted in the crash test dummies head braking off!

#### Dorney Park, Pennsylvania

Hercules, once the tallest wooden coaster in the world at 157 feet is having a long trim brake fitted to its breath taking drop. Apparently the speed will be lowered so much as it enters the lake turnaround that the top of the second hill will have to be lowered to enable the train to get over it!

### EUROPE

#### Efteling

Dutch park and venue of Euro Trip '96, Efteling is looking to install a new roller coaster. It must however not be too high or make too much noise due to local resident problems.

### UK

#### Space Shot

The first Space Shot (see article) in the UK may well be up and running at Blackpool Pleasure Beach in time for the new season.

#### Woodie?

Drayton Manor Park in Tamworth are reported to be looking for a major new attraction for the year 2000. No news as to what type of ride it will be, but park owner Colin Bryan is rumoured to have been viewing a Megafobia promotional video with interest. He has not yet been able to ride this great coaster, so maybe when he has.....

#### Belle Vue

Rumours are currently buzzing around the country that the world famous Belle Vue Park may be re-built. What is not known is where it will be. The original site is now a housing estate! Also, the legendary Belle Vue Bobs would probably have to be toned down quite a bit to comply with current health and safety regulations.

#### Birmingham

Newspaper reports about a 200+ foot high ride being tested on waste ground in Birmingham are untrue.

#### DISCLAIMER

*All of the rumours featured in this page are 'rumours'. The Club cannot accept responsibility for any inaccurate or untrue information. Due to the nature of the articles (and very secretive parks) it is obviously impossible to confirm the stories until parks release full details. If you hear a rumour send it to the Club address or E-mail:- rccgb@aol.com*

## Members Offer

### SHAKE, RATTLE & ROLL!

The follow up to the great book 'Roller Coasters - Their Amazing History' is now available. Once again Club member Robert Preedy has put together an excellent collection of photographs and trivia about the UK's greatest coasters of the past. 'Roller Coasters - Shake, Rattle and Roll!' has 65 pages of nostalgic information along with over 90 photographs showing some of the most amazing coasters once running throughout the UK.

This wonderful book is available to members, specially signed by the author for just £6.75 including P&P.

To order send cheque payable to 'Robert Preedy' to:-

"Shake, Rattle & Roll!", 54 Park Edge Close, Leeds, LS28 2LP

'Roller Coasters - Their Amazing History' is also still available at the same price.

### PLAY SAFE

*Less than .00002% of amusement parks visitors are injured on rides.*

*The chances of dying in an amusement park is 1 in 90 million.*

*Most park incidents are as a result of horseplay.*

*Only a very small proportion of ride-related injuries are caused by design, operation or maintenance problems.*

### QUOTE

*"Megafobia turns Wales into screams"*

*Denise Dinn-Larrick  
Custom Coasters*



# Members Page

## Car Pools / Lifts

It has become apparent on the last few Club Trips that some of you do not have transport to and from the parks. I have also found out about members driving to parks on their own, having three or four spare seats in their car. And to make matters worse, two members from London who both travelled alone to the recent Loopathon found out that they lived one road away from each other! Therefore I would like to start a list of

people willing to car pool, offer lifts, or more importantly, need lifts to Club trips. Due to the Data Protection Act 1984, I am unable to produce a full list of all members names and addresses and issue it to everyone, so this is how it will work. If you need a lift, would like to give a lift, or are interested in car pooling, please write to me. I will then produce a special list and then, when requested, I will supply you with a list of members in your

area or on the route to the particular trip. The list will only contain the members name, town and telephone number (i.e. Not full address). Then you can contact each other direct and make whatever arrangements suit you best (pick up point, petrol sharing, etc.). So, to be put on the list please write to me indicating if you are offering a lift, wish to car pool or need a lift!

## TRIP DEADLINES

On Club trip invitations you will have noticed application deadlines. These are set for two important reasons:- One, to enable us to send you the itinerary and trip badge in time, and two, to enable me to advise the parks of the amount of people attending so that they can make the necessary catering arrangements. The second reason is very important, as recently late applications, which I have honored have given problems for the parks in providing enough food. A recent example is the Loopathon '96 trip in which 24 applications were received after the deadline date. This also gave me one or two problems as I had already faxed the names to Alton Towers for registration and had to re-fax the list on four occasions!


Now to avoid disappointment I was trying to be helpful in accepting the applications after the deadline, but unfortunately in future I will have to be strict on the deadline dates. Therefore please make every effort to apply as soon as possible for trips and not after the deadline. In return I will do my best to advise you of forthcoming trips with as much notice as possible.

This will make it much easier for both me and the parks and will also ensure that there is enough catering for everyone!

## The End Is Nigh!

Or where can I get my last ride this season!

Alton Towers Closes 3rd November	Pleasureland, Southport Closes 4th November	Legoland, Windsor <b>Closed</b> 29th September
Camelot Theme Park Closes 3rd November	Frontierland, Morecambe Closes 27th October	Flambards Village Closes 3rd November
Drayton Manor Park Closes 27th October	Flamingoland, Malton Closes 27th October	Thorpe Park Closes 27th October
Lightwater Valley Closes 27th October	Peter Pans, Southend Closes 29th October	Dreamland, Margate Closes 3rd November
Oakwood Closes 29th October	Rhyl Amusement Park <b>Closed</b> 29th September	Brighton Palace Pier Open all year
Pleasure Island Closes 29th October	Pleasure Beach, Great Yarmouth <b>Closed</b> 29th September	Brean Leisure Park <b>Closed</b> 1st October
Barry Island Pleasure Park Weekends all Winter (Weather Permitting)	Fantasy Island, Skegness Closes 3rd November	Blackpool Pleasure Beach Closes daily 3rd November Winter weekends until January.
American Adventure <b>Closed</b> 3rd October	Chessington World Of Adventures Closes 3rd November	<i>Call the parks for more details. Many have firework parties at the end of the season.</i>



**USA '97**  
Thank you for your applications. The list is now closed and all those who applied will be contacted shortly.

## BLACKPOOL TICKETS

Due to a change in ticketing system, any ticket sheets purchased at Blackpool Pleasure Beach during the last three months must be used by the end of the season. Details as to why and what you should do if you have quite a few left are still sketchy, but the Park has confirmed that it is not changing to a pay one price system. Call the Pleasure Beach for full information (01253 341033).



## Welcome

I had planned to welcome new members each issue by printing their name and town (as with Issue 1). However the *new* Club has proved very popular and since Issue 1 we have had 173 new members, which is just a few too many to print in this little box!

Therefore, if you have joined in the last eight weeks, a big warm welcome to you from Tina, myself and all the existing members! See you on a Club trip soon.

For a merchandise order form please send an S.A.E. to the usual Club address (marked 'Merchandise')



# Editors Comment

I hope you have enjoyed reading the second issue of AIRtime and are finding the format to your liking. The front page stories are good news, especially as Dorney Park had fought for a long time with local residents opposed to the new coaster. Lets hope some of our UK parks have similar success in their planning application battles.

A lot has happened since the first AIRtime and I really must thank you again for all your support. All your letters, telephone calls and E-mails are really encouraging and it is nice to know that you are enjoying being a member of the *new* Roller Coaster Club of Great Britain. Since the changes there have now been three trips – Oakwoodie 2, Euro Trip '96 and Loopathon '96. From the attendance figures its pleasing to know you still want me to organise the trips. I must admit I was nervous about Oakwoodie 2, with it being the first trip since the changes, and not really knowing your views about the situation, but as soon as I saw 181 of you cheering and screaming on Megafobia and taking part in the 'Arms Up' water chute challenge I was quickly reassured! Maybe I'll introduce some cheating penalties in the Crystal Maze Challenge next time though! My score of -712, yes, minus 712 was as a result of outside interference and not because my team (Dave, Michelle, Stuart & Kelly) and I couldn't solve the clues! Honest!!

I am pleased to see that most of you know your new membership number! The database system I am using (Microsoft Access), is set up to work with the membership number as the key identifier. This is why I do not need your address on trip/merchandise applications. I just enter you number and up comes all your details. That is why you must ensure that you write on the correct number. Membership numbers will always be printed in brackets after your surname on your address labels on all mailings.

Finally, please accept my apologies for lateness of the 'End Of Season Ball' details. I hope that having the date in Issue 1 though has helped you keep the day free. Don't forget if you are interested in Go-Karting to contact me about Burning Rubber '96 and of course, did I mention the Club Pantomime? Oh, no I didn't, oh yes I did! One show only, so be quick in ordering your seats.

For now though, enjoy the rest of the season and don't forget to use those Blackpool tickets if purchased in the last three months!

## It's a Date!

*Make a note in your diary of forthcoming Club events. Full details will be sent to you in good time.*



October 26th  
**End Of Season Ball**  
Thorpe Park  
Halloween Theme  
Sit down meal & ERS on X/No  
Way Out. Includes Firework  
party.

November 16th  
**Burning Rubber '96**  
Go-kart race at Formula Fun in  
Acton, London - Contact the  
Club for full information.  
Limited places left.

**CLUB PANTOMIME - January 4th 1997 6.00pm**

### Aladdin

Compass Theatre, Ickenham, Hillingdon, Middlesex

Come and join in the fun this Christmas at the first ever Club pantomime. Lots of fun, plenty of laughs and loads of coaster shouting! You may even win a prize!

**ONE SHOW ONLY - £7.50 per person, including party**

There is only one performance so tickets will be sold on a first come first served basis. To make a booking call 0181 848 4073 and leave your name, membership number and amount required. Then send payment to the Club address marking your envelope 'Pantomime'.

**A map and list of hotels/B&B's will be sent with your tickets.**

Why not spend the day in London at the January sales before coming to the show. There's also a party afterwards with a licenced bar!

The Theatre is easily accessed from the M40/M1/M25/M4 or Piccadilly/Metropolitan Underground Lines

## AIRtime AIRtime

*Editor:* Andrew Hine *Proof Reader:* Tina Hine

*Contributors:-* NAPHA, Mark Wyatt (Inside Track), Susan Swanson (Rye County Historian), Stephen Bunting (Port Aventura photograph) all the Internet coasterites and the many parks and manufacturers featured throughout.

*The Roller Coaster Club of Great Britain is organised by Andrew & Tina Hine*

All correspondence to:-

The Roller Coaster Club of Great Britain  
PO Box 235  
Uxbridge  
Middlesex, UB10 0TF.

Internet address for comments/suggestions/anything: [rccgb@aol.com](mailto:rccgb@aol.com)

Printed by Phoenix Print & Design, Yiewsley

AIRtime is the registered name of the newsletter of The Roller Coaster Club of Great Britain. All content, including text, logo's and the names AIRtime, The Roller Coaster Club of Great Britain, Oakwoodie, Loopathon and Blackpool Bash are copyright of Hinesight. No part of the newsletter or Club logo's may be used or reproduced without express permission of Hinesight. All other facts, figures and logo's belong to the parks/manufacturers concerned and are used with thanks and in the best interest. All the information in AIRtime is given in good faith. Whilst every effort has been made to ensure the accuracy of such information, the Club or its officers will accept no liability whatsoever for any errors, inaccuracies or omissions.

